

BATTLEBORN: Memorial to Nevada's Fallen Warriors



**They shall grow not old, as we that are
left grow old:
Age shall not weary them, nor the
years condemn.
At the going down of the sun and
in the morning
We will remember them.**

-Excerpt from “For The Fallen” by Laurence Binyon*

*Quote taken from BATTLEBORN: Memorial to Nevada’s Fallen Warriors Request For Qualifications (RFQ)

PROJECT DESIGN CRITERIA

“BATTLEBORN: Memorial to Nevada’s Fallen Warriors is intended to honor the extraordinary dedication, commitment, and sacrifice of Nevadans who have borne the battle through the service in the armed forces. The memorial is meant to be a place of contemplation and reflection; a peaceful place where family members, veterans, and members of the public may come to remember; and, as well, a space for public gatherings.”

-Excerpt from BATTLEBORN: Memorial to Nevada’s Fallen Warriors Request For Qualifications (RFQ)

The proposed location for the BATTLEBORN Memorial is on the Legislative Plaza in Carson City, NV. The Memorial Site has a direct and visual connection to the existing Veteran’s Wall on the State Library building. Our design for the Memorial explores this connection and creates a strong viewing and immersive experience within the space. The historic State Archive Building is the actual backdrop of the Memorial Site with the State Capitol Building opposite to the Memorial Site.

As described in the project RFQ, the key points we explored with our design concept were:

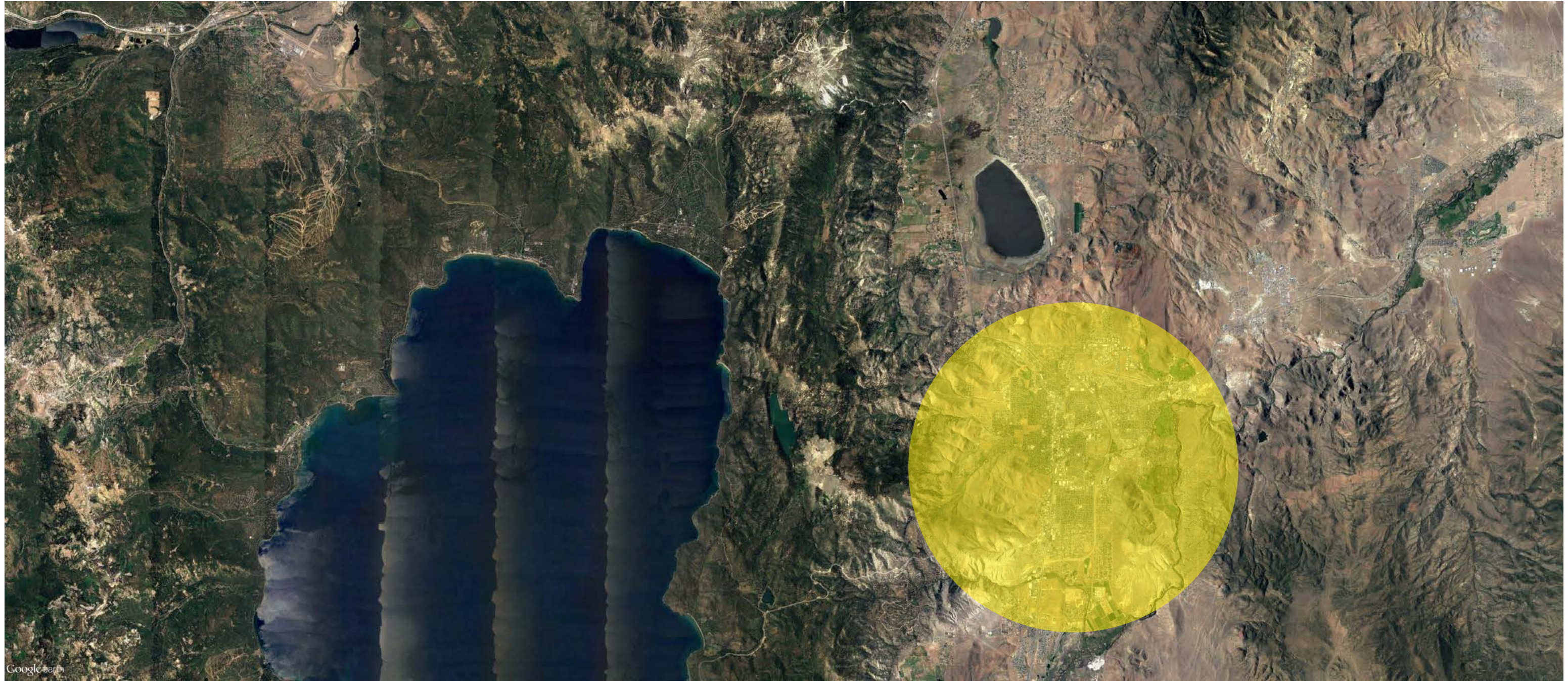
- Provide a place for personal reflection that is interactive and experiential during the day and night
- Provide a place for social gatherings with seating for appropriate use that will be durable
- Be of appropriate scale, form, and materiality relevant to the existing site and surrounding environment
- Interact with the ground plane
- Interact with the sky plane above
- Reflect a sense of timelessness
- Is inclusive of all branches of the U.S. Armed Forces
 - Air Force
 - Army
 - Coast Guard
 - Marine Corps
 - Merchant Marines
 - Navy
- Recognizes each of the eras/conflicts and acknowledges the diversity of the Fallen Warriors
- Includes an Educational Component
- Use of the individual Fallen Warrior names with the ability to add names in the future should the unfortunate occur



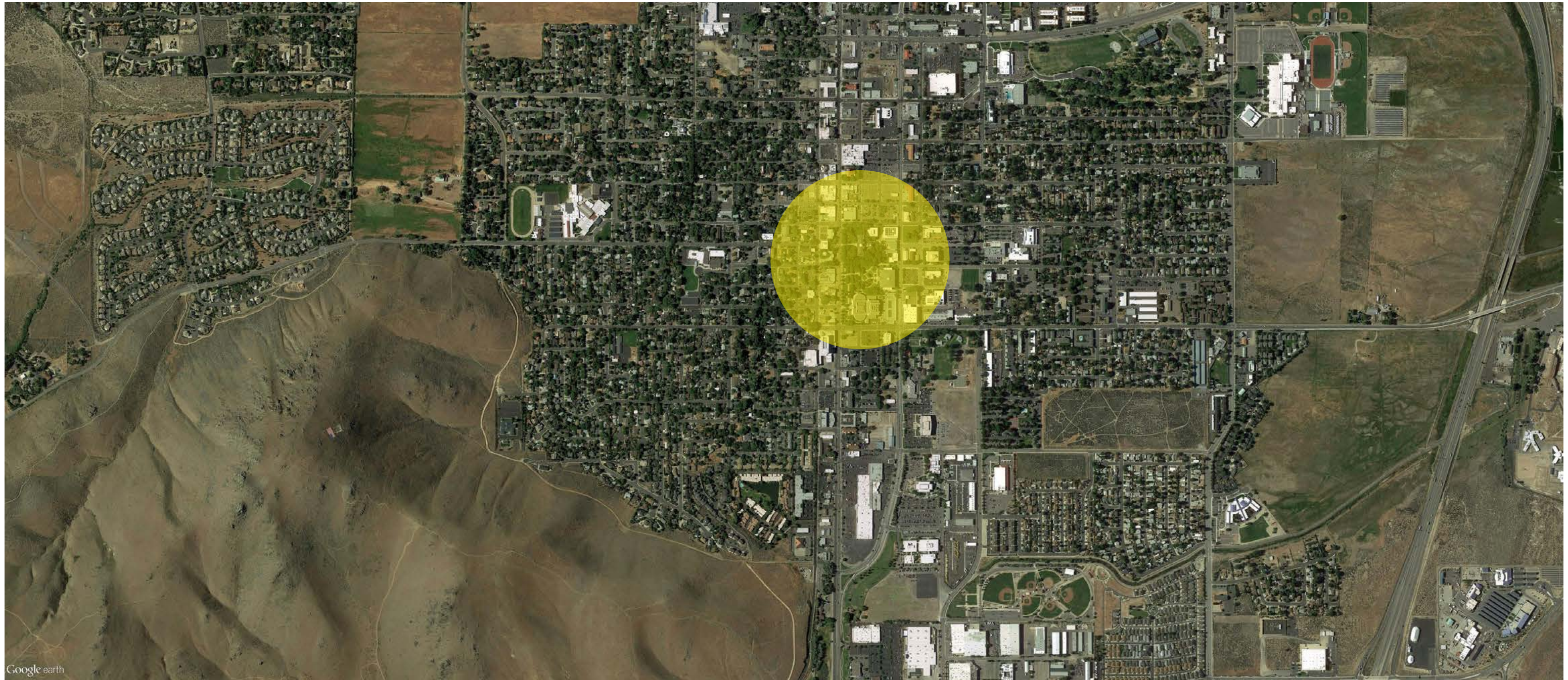
The images on this pages are taken from the six major American Wars:

- Civil War
- World War I
- World War II
- Korean War
- Vietnam War
- Iraq/Afghanistan War

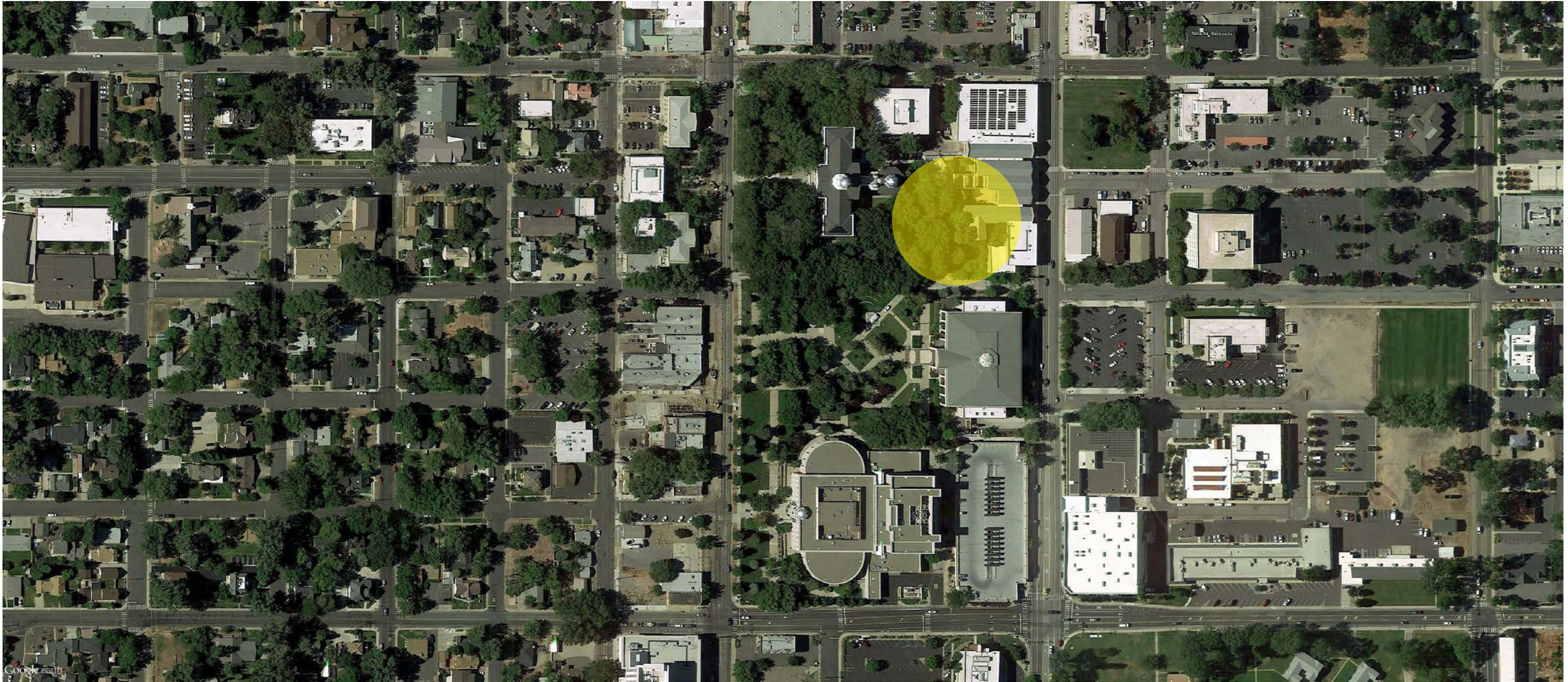
*Images pulled from Nevada Department of Veterans Services “Nevada’s Fallen Heroes” Page:
http://www.veterans.nv.gov/page/fallen_heroes_nevada



Google Earth



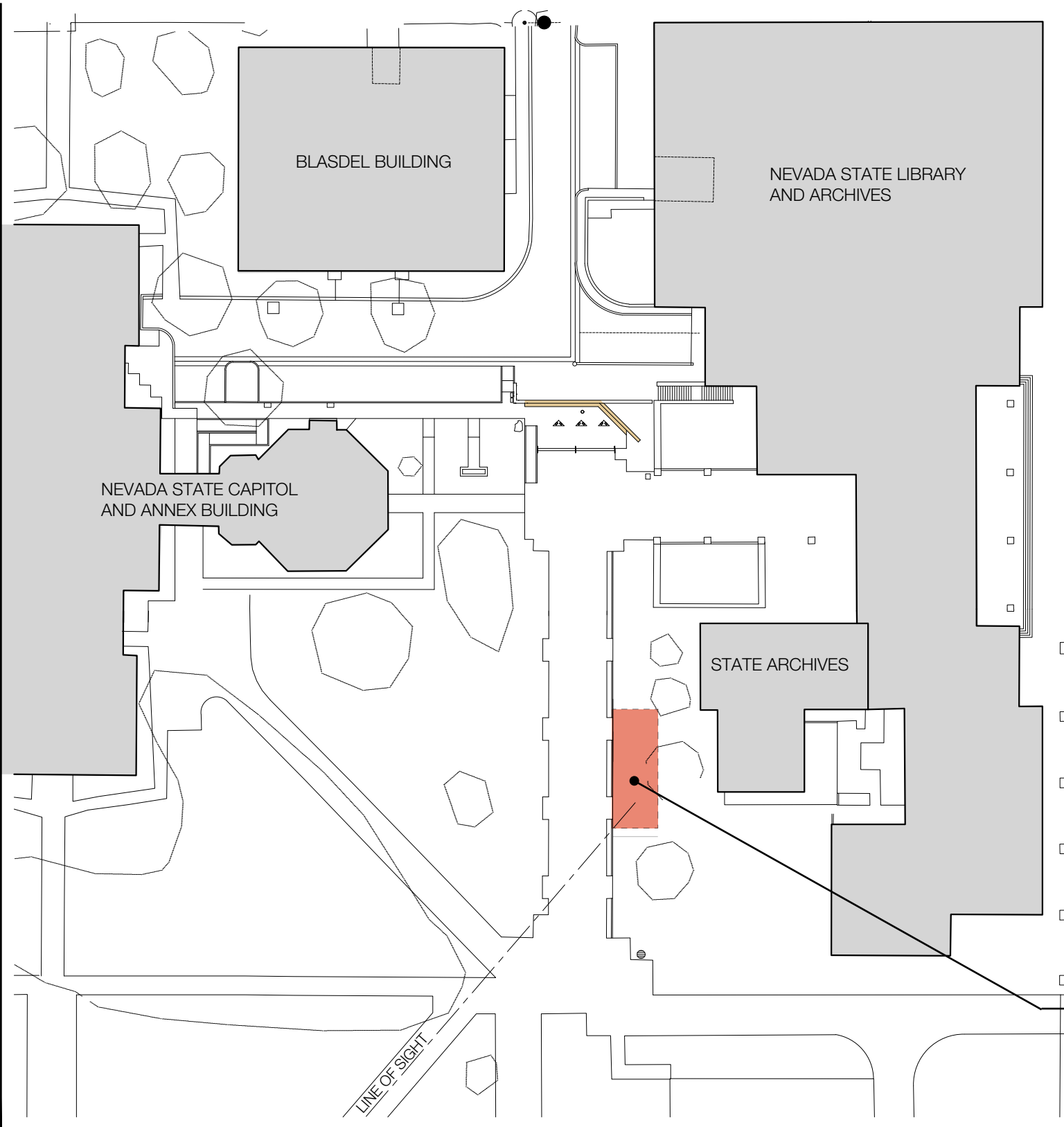
Google earth



SITE | EXISTING BUILDINGS



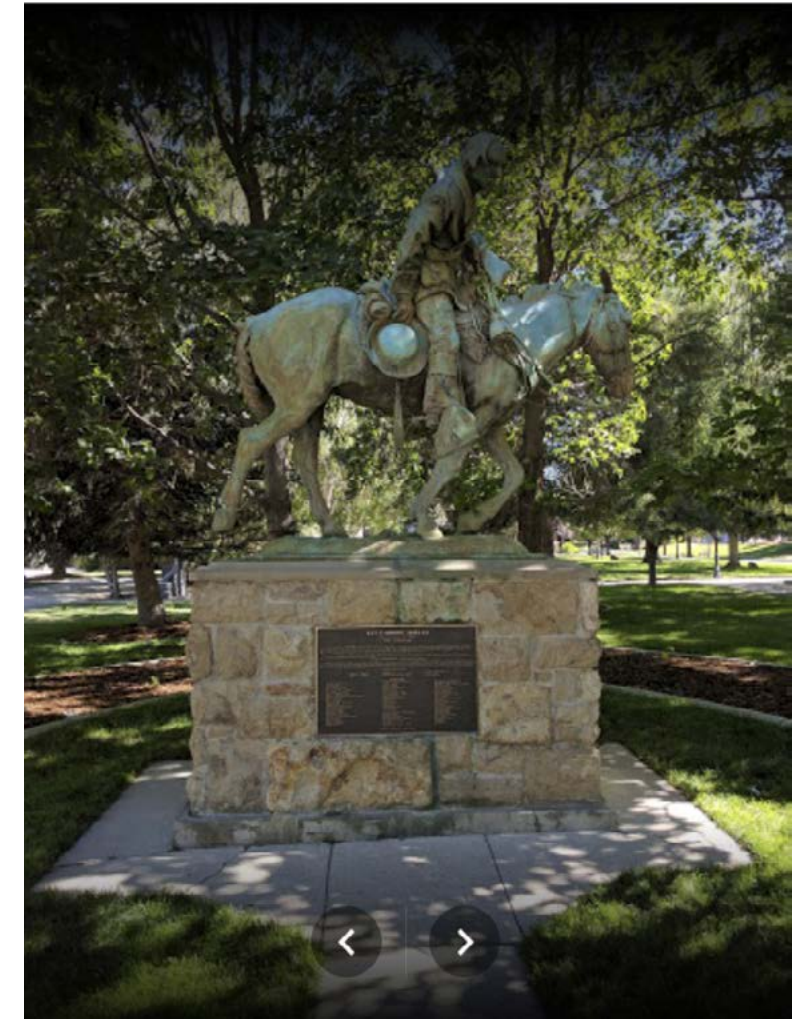
SITE | EXISTING BUILDINGS



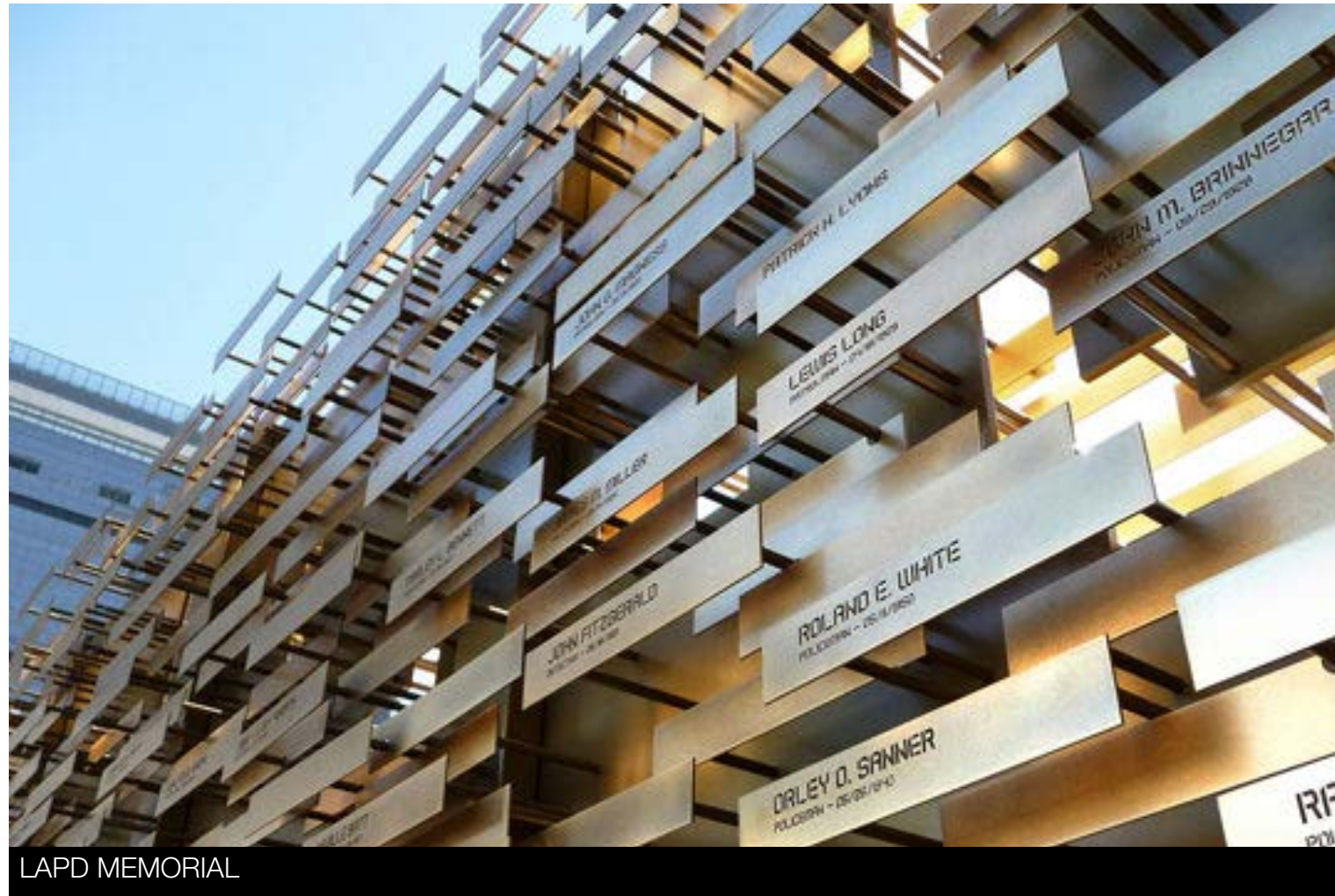
BATTLEBORN: Memorial For Nevada's Fallen Warriors

PROPOSED VETERAN'S MEMORIAL LOCATION PLAN

SITE | EXISTING MEMORIAL ELEMENTS



PRECEDENTS | MEMORIALS



LAPD MEMORIAL



MINNESOTA FALLEN FIREFIGHTER MEMORIAL



ABOVE AND BEYOND VIETNAM WAR MEMORIAL



BERLIN HOLOCAUST MEMORIAL



VICTIMS OF VIOLENCE MEMORIAL



OKLAHOMA CITY BOMBING MEMORIAL

PROJECT CONCEPT

Our design for the BATTLEBORN: Memorial to Nevada's Fallen Warriors takes on three key conceptual ideas to become a minimal 56'-0"L x 13'-6"w x 12'-0"h metal structure that will slightly change each day as the patina of time slowly evolves the materiality of the space; creating a space for reflection, inspiration, and to "honor the extraordinary dedication, commitment, and sacrifice Nevadans who have borne the battle through service in the armed forces."*

The first idea explores being enveloped by that moment in life when rain pours down on you and all the sensations that accompany that feeling. As one walks, stands, or sits within the Memorial space, they will become showered with the inverse shadows of the Nevadan Fallen Warriors from the steel shade structure above. The idea is that the Nevada Fallen Warrior steel name cutouts will bath the Memorial patrons in light and shadow from the sky above, while also creating shadows on the ground, thus creating a connection between Earth and Sky, whereas we the patrons are able to experience the in-between space thanks to the ultimate sacrifice made by the Nevadan Fallen Warriors for their love of friends, family, and country. The symbolic element of those who died for us, are still with us, shining down on us from above, as shown through the layered veil of "shadow text rain drops." At night, the shade structure screen will be illuminated from above, creating a dramatic wash of the names on the ground and wall structures below.

The second concept of the Memorial will explore a specific iconic image (to be decided upon in collaboration with member of the Panel/Committee and Project Team) that will be cutout of a metal material (brass or Cor-ten weathering steel TBD) through a series of perforated holes. The image will be subtle, but throughout different times of the day, it will have an inverse shadow effect on the ground. At night, the panels will be illuminated from the interior, thus creating a glowing image effect. In addition to this perforated image, we will also incorporate a steel cutout quote and the BATTLEBORN logo which will be illuminated at night as well.

The third conceptual idea is created by the actual perforations and negative cutouts of the steel shade structure and walls which will create a subtle sound like soft rustling leaves in the wind; creating a peaceful environment that will be further developed through the minimal reflecting pond. The reflecting pond will actually reflect the shadows of the text and metallic surface of the walls.

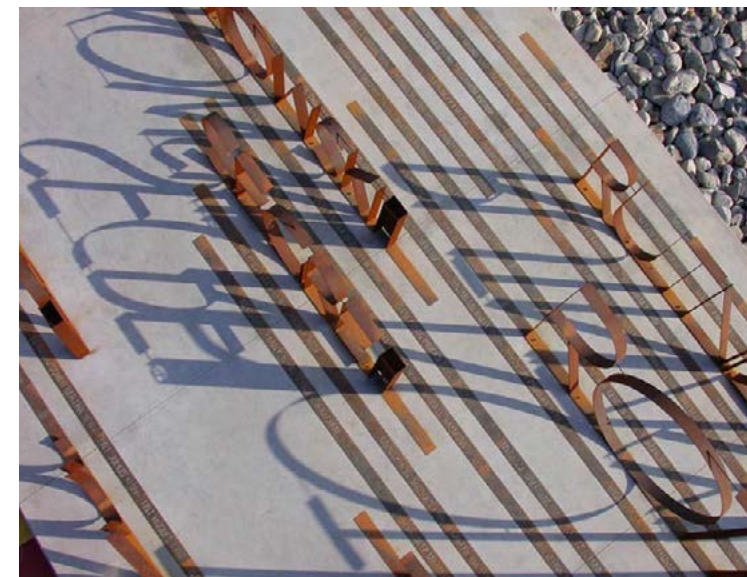
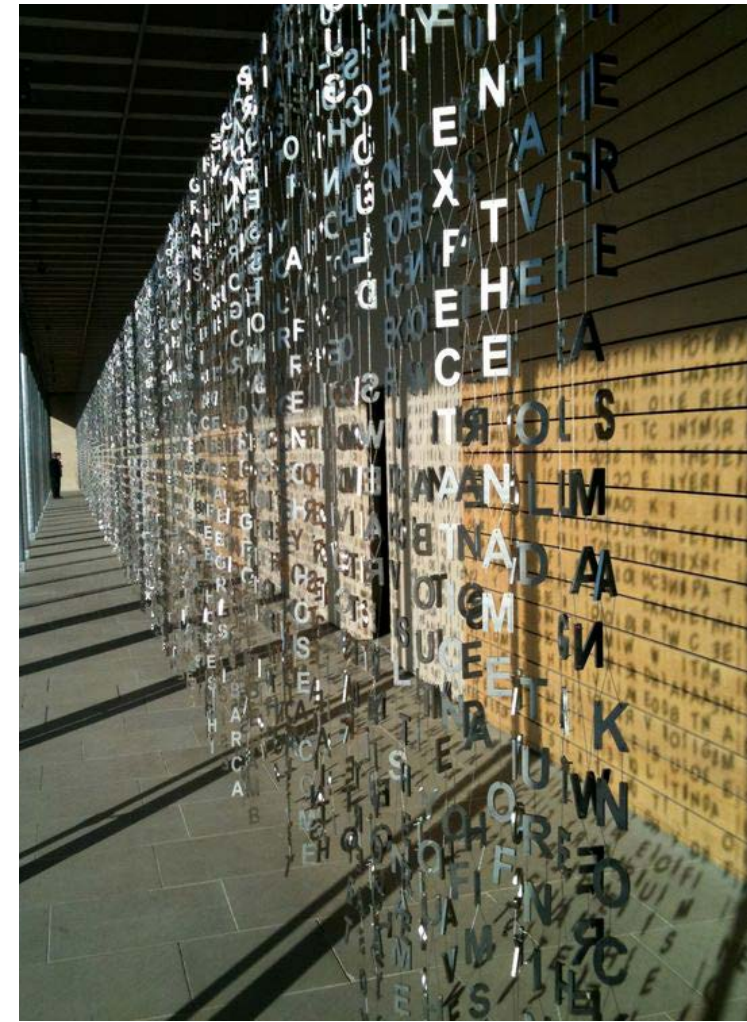
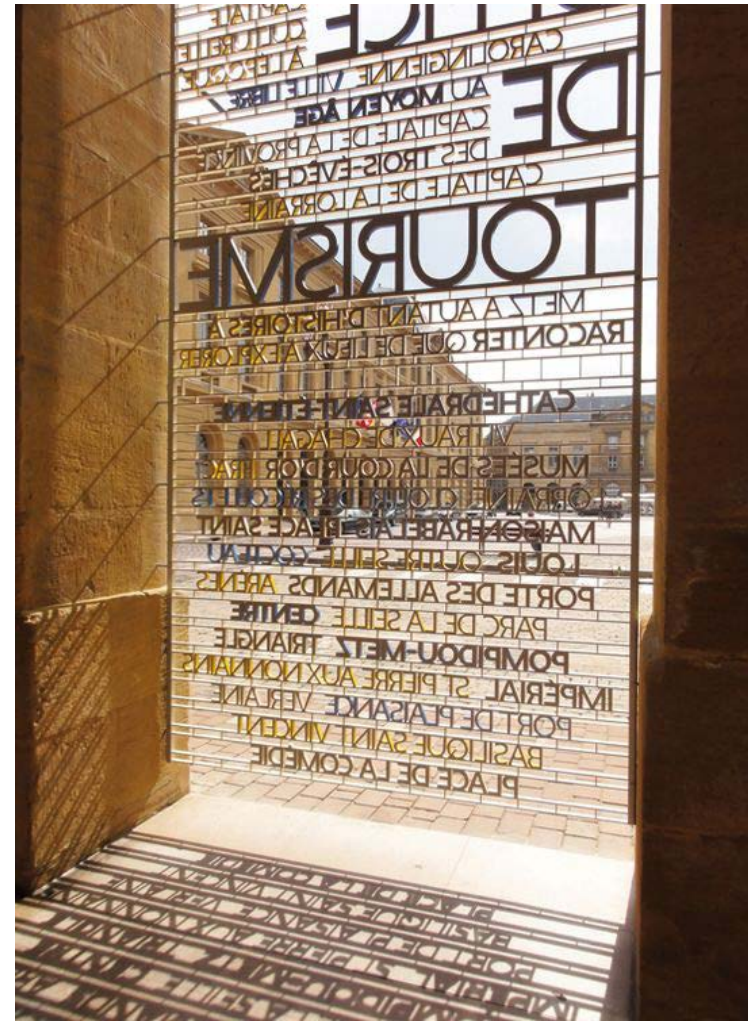
The Memorial will also include minimal monolithic concrete and Nevada limestone benches. Our walkway pavers will be made out of limestone with metallic laser cut inlays with text TBD. Depending on additional budget, we would like to look into routing out text into the pavers as well. The overall materials are built to endure, but will also age and weather with time, staying true to their inherent qualities. The Memorial will also meet all local and national ADA codes. The architectural form of the Memorial is inspired by the geometry of the surrounding buildings with a contemporary approach. It's at one time, heavy and strong at the core with a foundation that is built to last, yet the space has a sense of lightness from above, that is also mighty as it is beautiful, just like the Nevadan Fallen Warriors it represents.

*From BATTLEBORN: Memorial to Nevada's Fallen Warriors Request For Qualifications (RFQ)

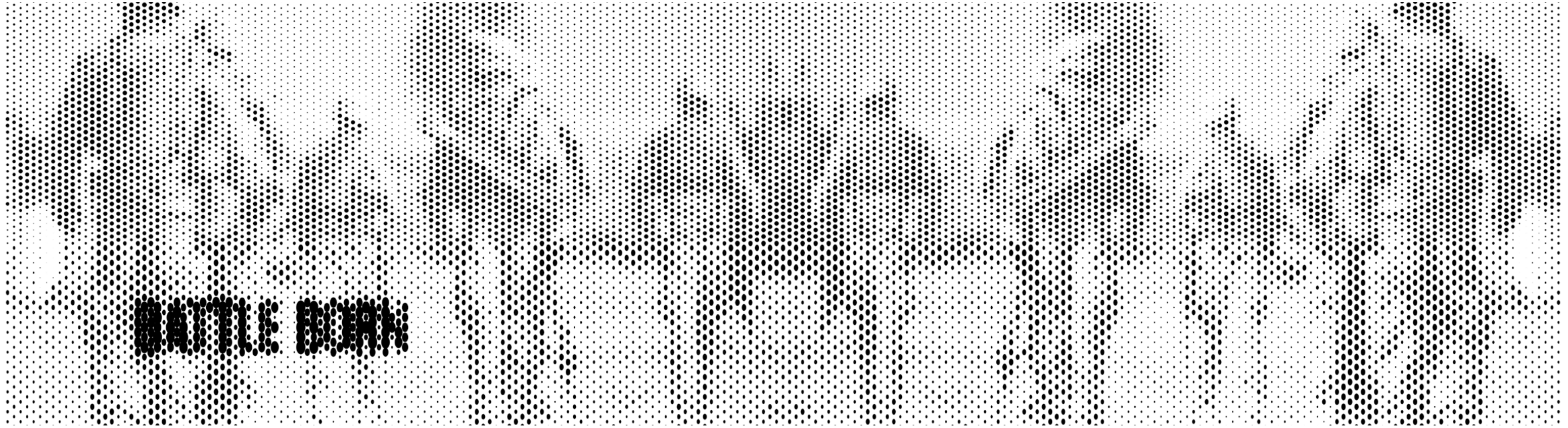
I've seen things you people wouldn't believe. Attack ships on fire off the shoulder of Orion. I watched C-beams glitter in the dark near the Tannhäuser Gate. All those moments will be lost in time, like tears in rain. Time to die.

-Excerpt from Ridley Scott's "Blade Runner," "Roy Batty" quote written and read by Rutger Hauer

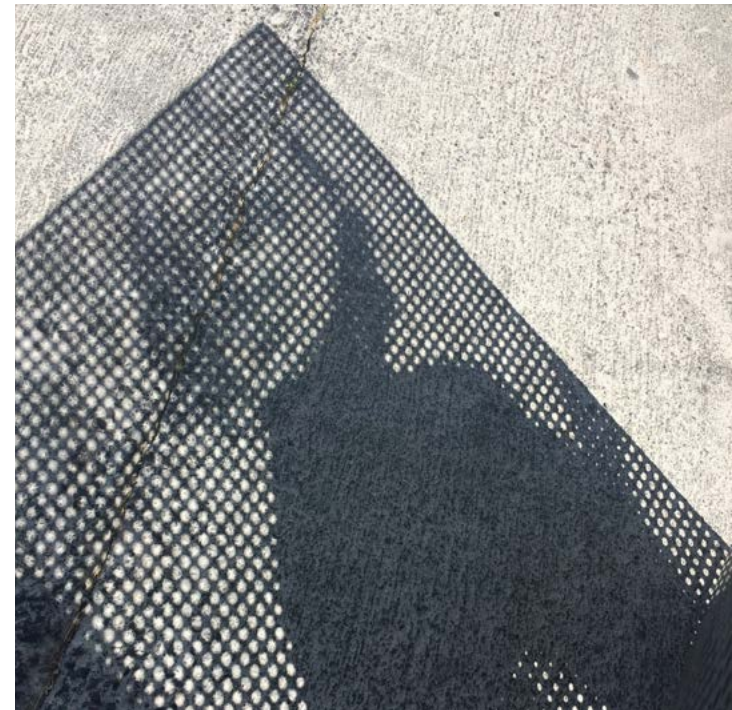
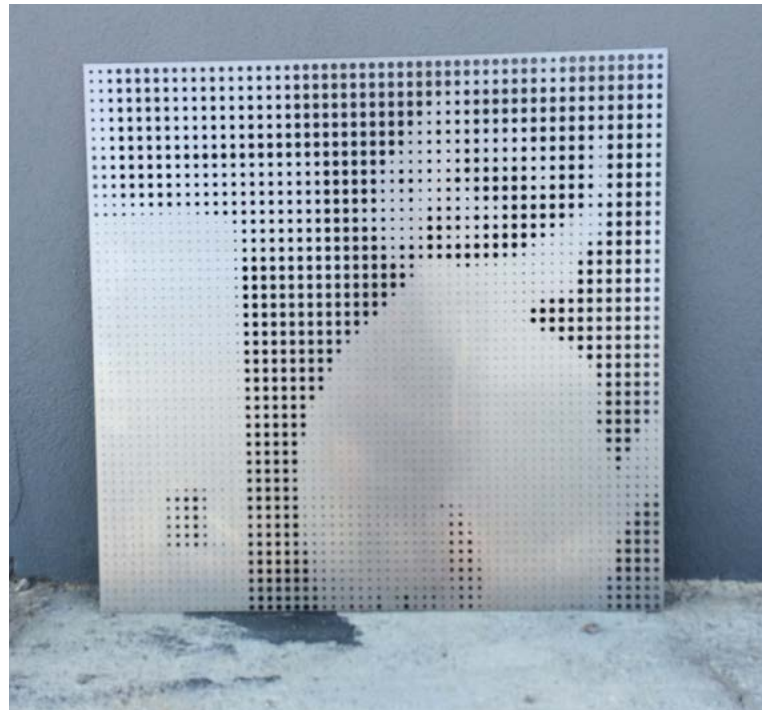
PRECEDENTS | SHADOW TEXT PLAY



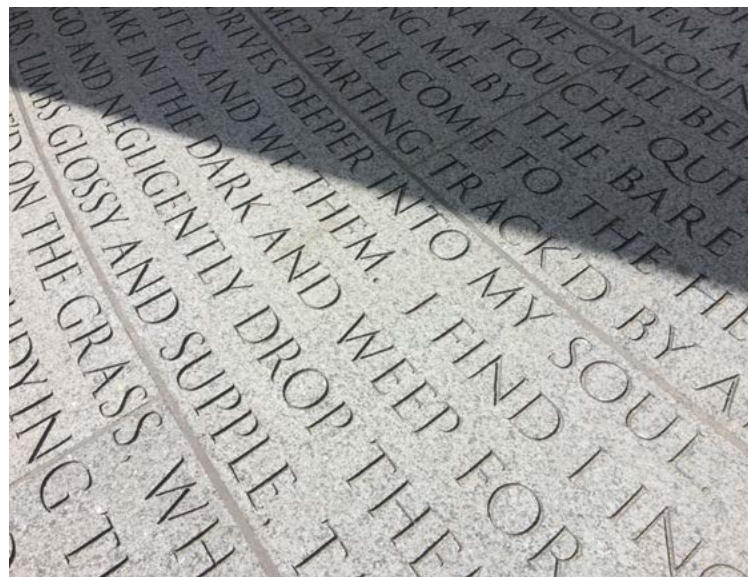
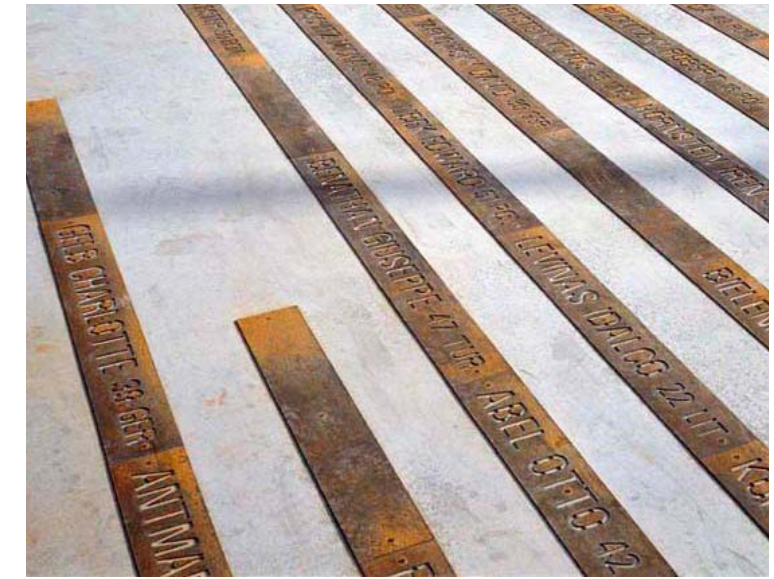
PRECEDENTS | PERFORATED IMAGE SHADOW NEGATIVE



EXAMPLE IMAGE: ACTUAL IMAGE WILL BE SELECTED IN COLLABORATION WITH MEMBERS OF THE COMMITTEE/PANEL AND PROJECT TEAM MEMBERS



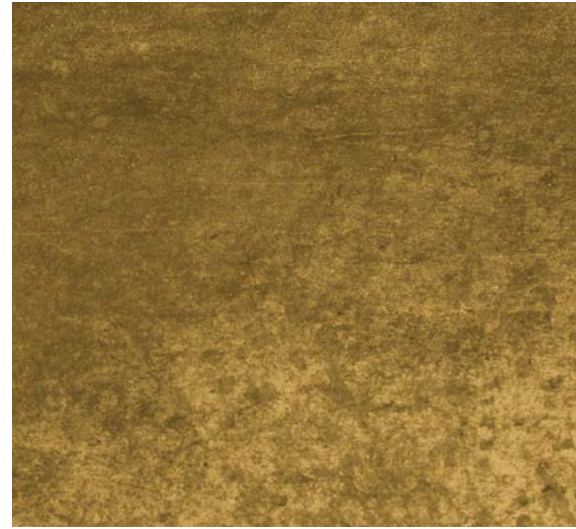
PRECEDENTS | DETAILS



MATERIALS



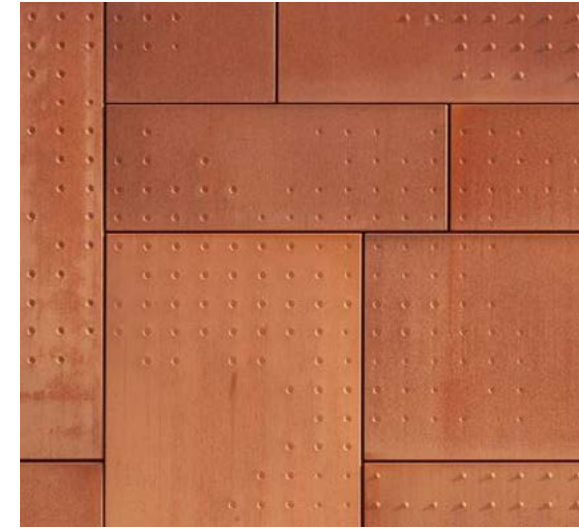
BRASS - MATTE



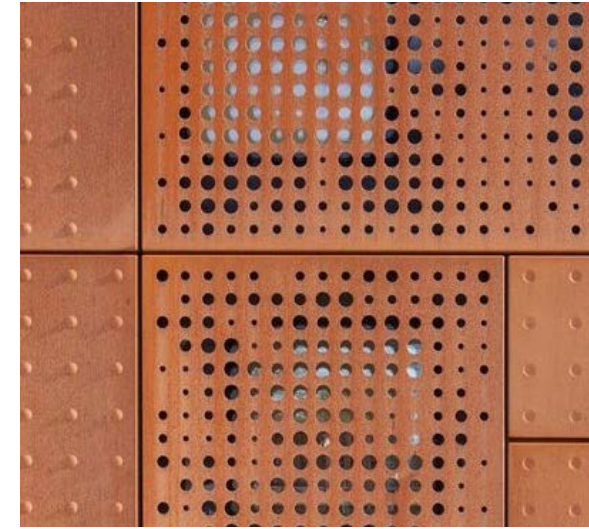
BRASS - AGED PATINA



HOT ROLLED STEEL



COR-TEN WEATHERING STEEL



PERFORATED WEATHERING STEEL



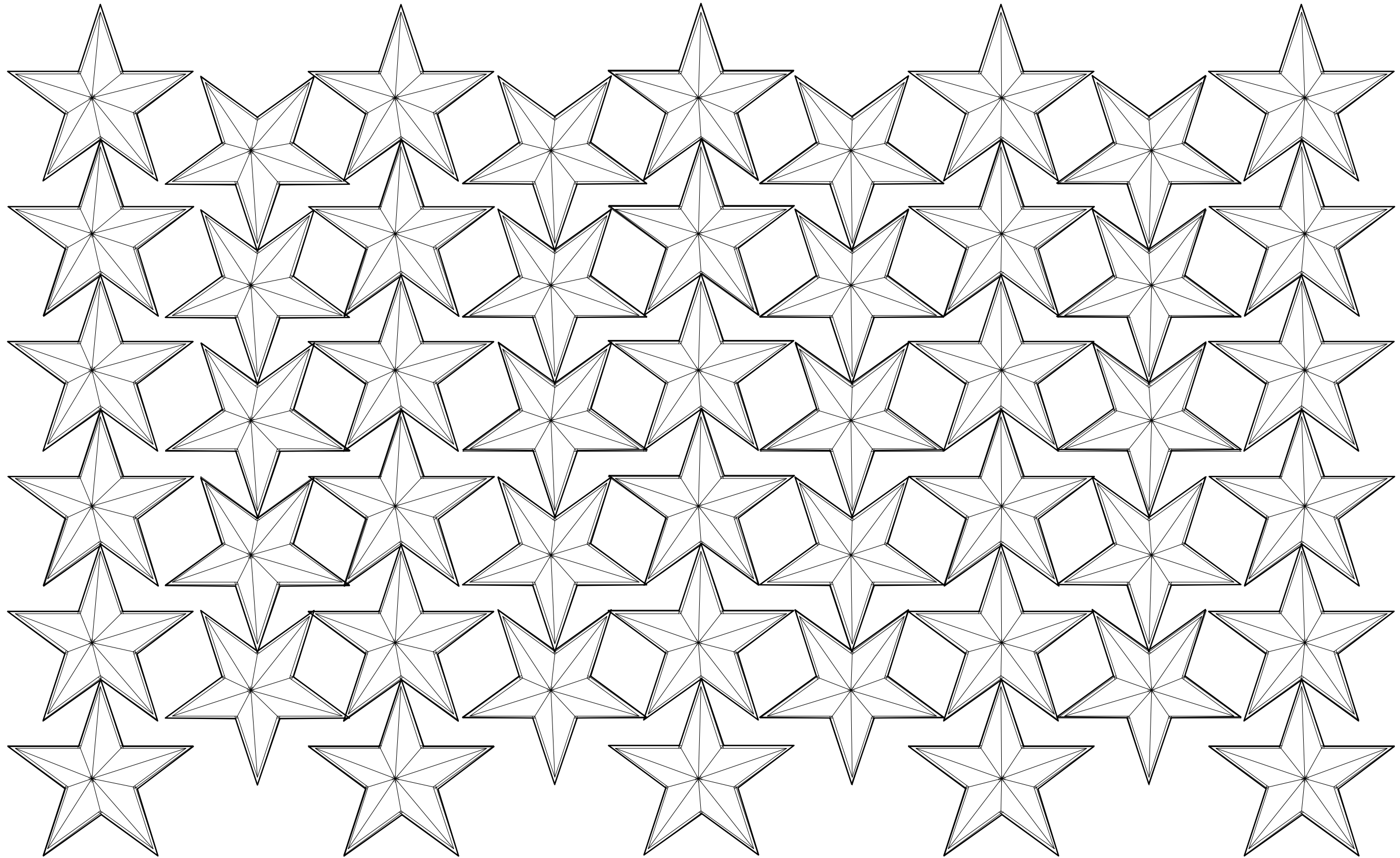
NEVADA LIMESTONE



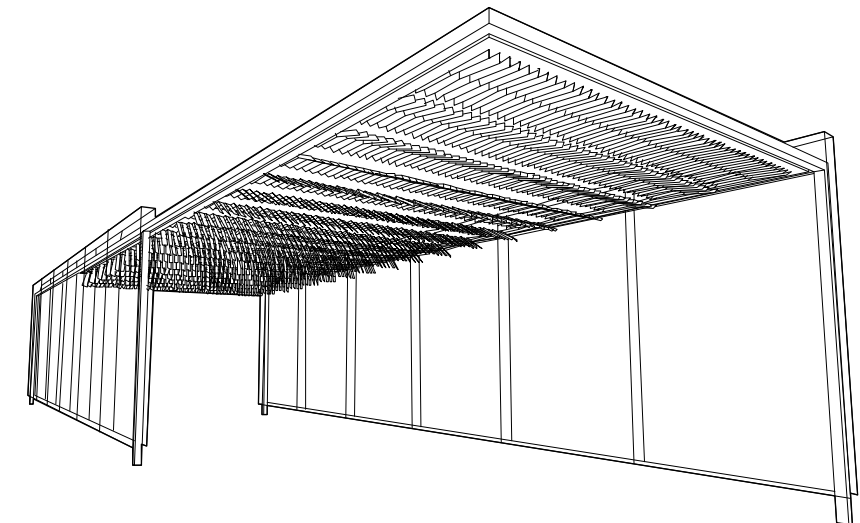
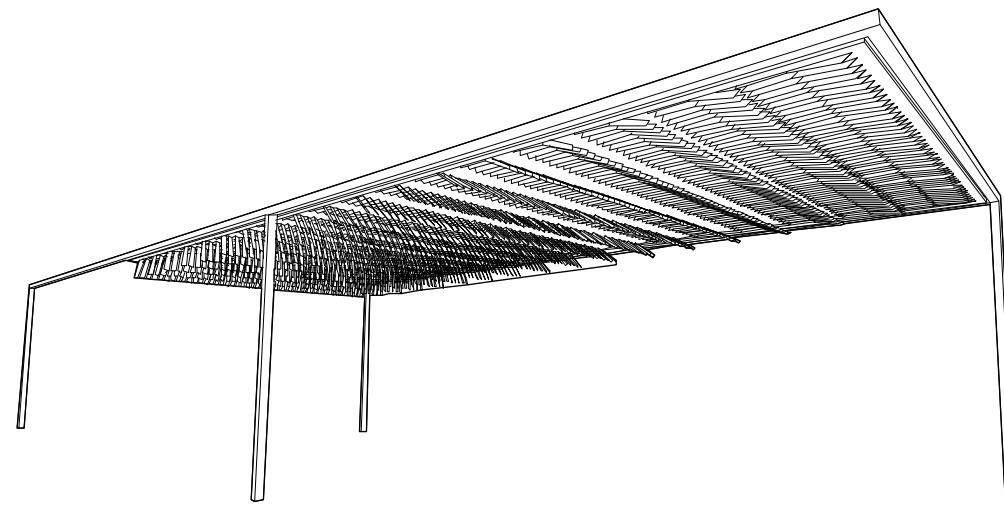
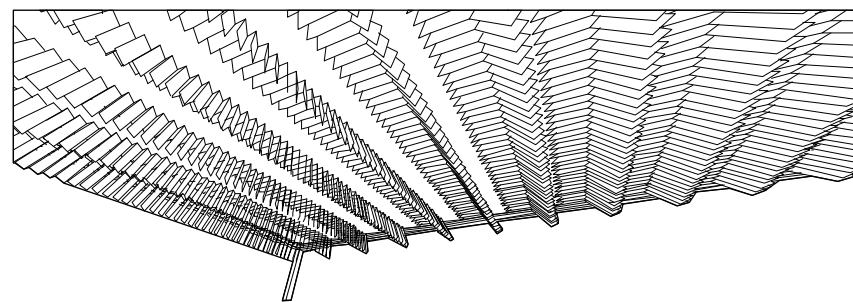
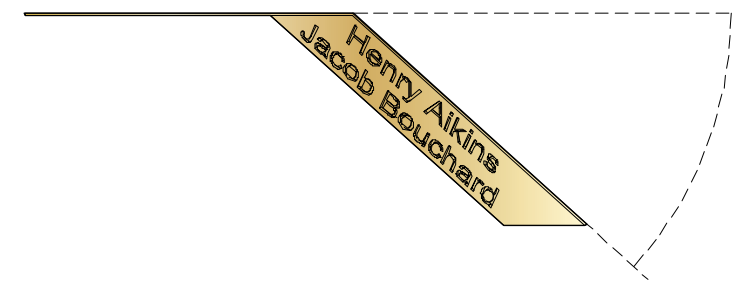
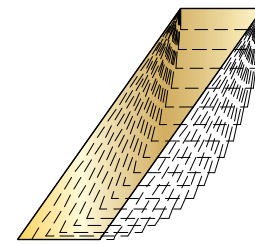
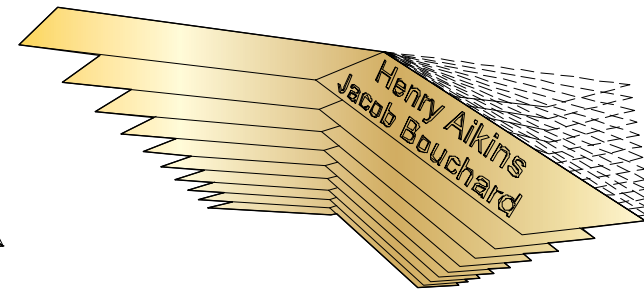
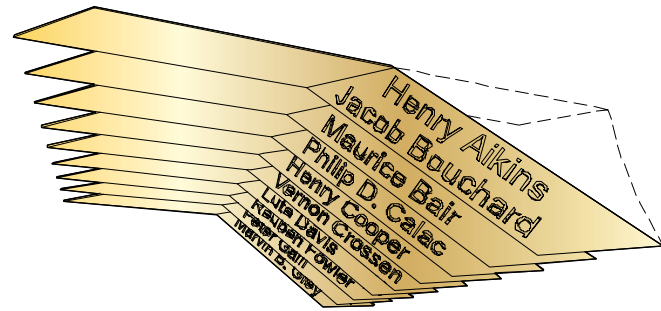
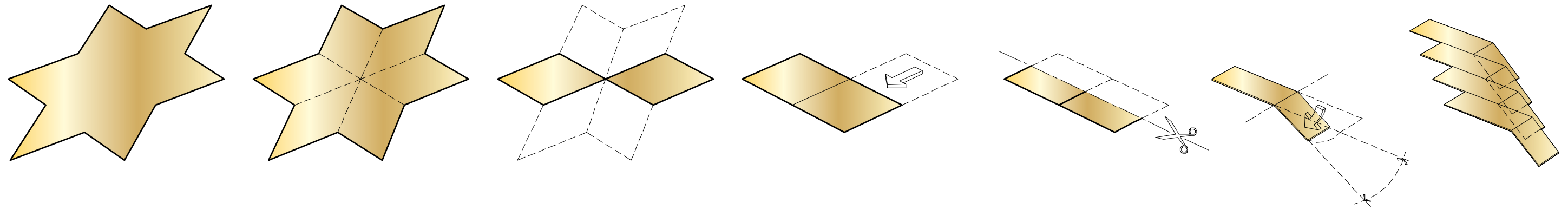
CONCRETE



BLACK GRANITE - POLISHED



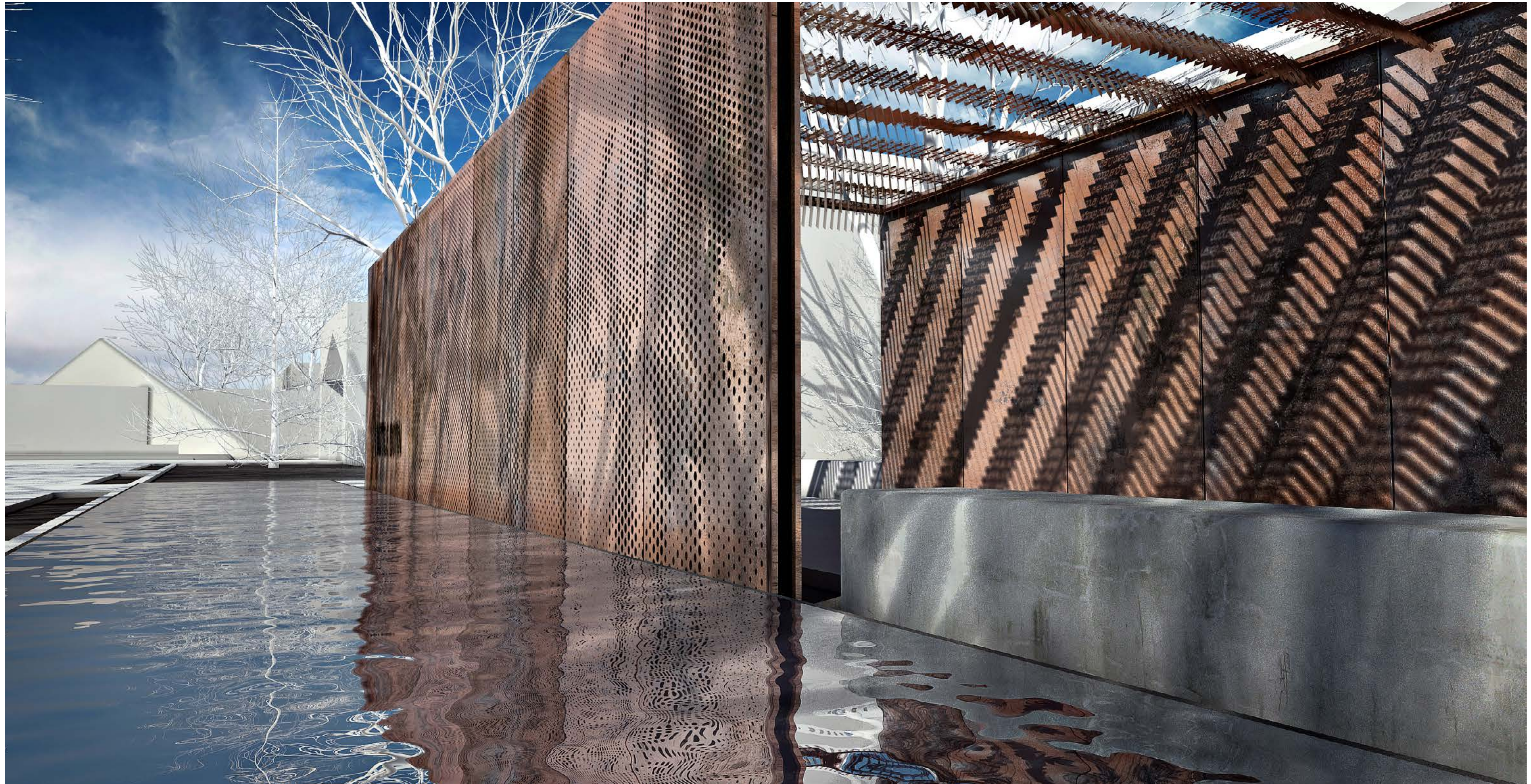
PROCESS | SKETCHES | SIX-POINTED STAR (HEXAGRAM): "INTERLACING TRIANGLES SYMBOLIZE OPPOSITES" SUCH AS DARKNESS AND LIGHT AMONG MANY PHILOSOPHICAL IDEALS SUCH AS "MAN'S POSITION BETWEEN EARTH AND SKY." WE ALSO USED THE SYMBOL AS A BASIS FOR EACH POINT REPRESENTING ONE OF THE SIX WARS THAT THE FALLEN WARRIORS PASSED AWAY IN.

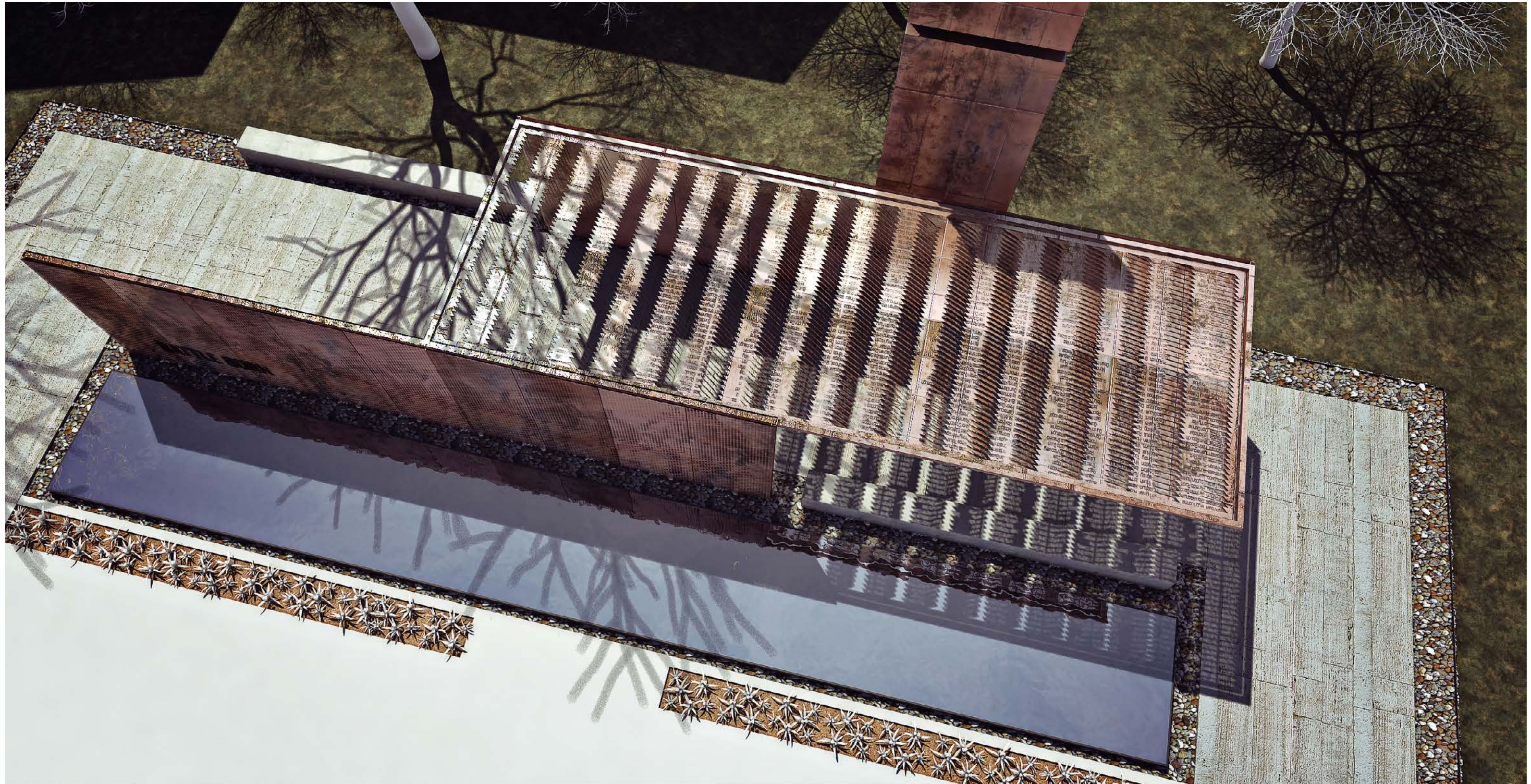


EXTERIOR SHOT | DAY



EXTERIOR SHOT | DAY





EXTERIOR SHOT | NIGHT



EXTERIOR SHOT | NIGHT



PROJECT BUDGET BREAKDOWN

Artist Fee (10% of budget)	\$25,000
Consultation Fees (*engineers, architects, etc.)	\$10,000
Fabrication (Include contractors and/or fabrication by artist)	
Materials and Supplies	
Lighting	
Transportation of Finished Artwork	
Installation (labor, equipment rental, permits, landscaping, etc.)	\$180,000
Insurance (artwork, liability, Workers Compensation, etc.)	\$5,000
Travel	\$3,000
Administrative Expenses (telephone, postage, studio overhead, etc.)	\$500
Photography and Documentation	\$1,000
Copyright registration fee	
Photographs of work in progress	
On-site photographs of completed, installed work	
Required Plaque with specific language	\$500
Contingency (10% of project budget)	\$25,000
TOTAL BUDGET	\$250,000

*Licensed in the State of Nevada

**Note: The reflection pond is not included in the \$250K allowable budget, but the memorial can be designed and built in a way to allow for the pond installation to happen at another phase if additional funds are secured.

**No day shall erase you from the
memory of time.**

-Virgil